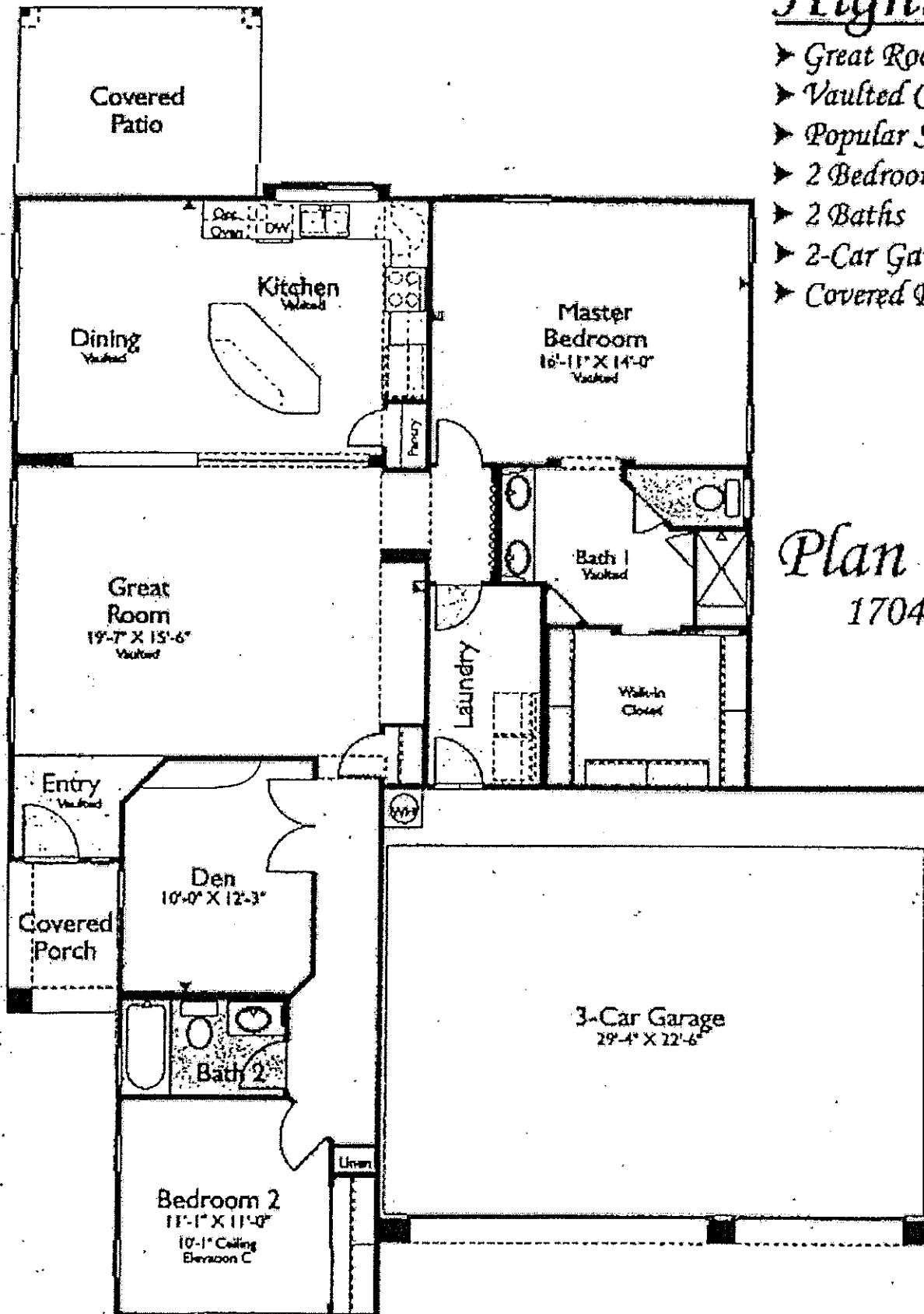


The La Posada

Highlights

- Great Room
- Vaulted Ceilings
- Popular Split Floor Plan
- 2 Bedrooms + Den
- 2 Baths
- 2-Car Garage
- Covered Patio



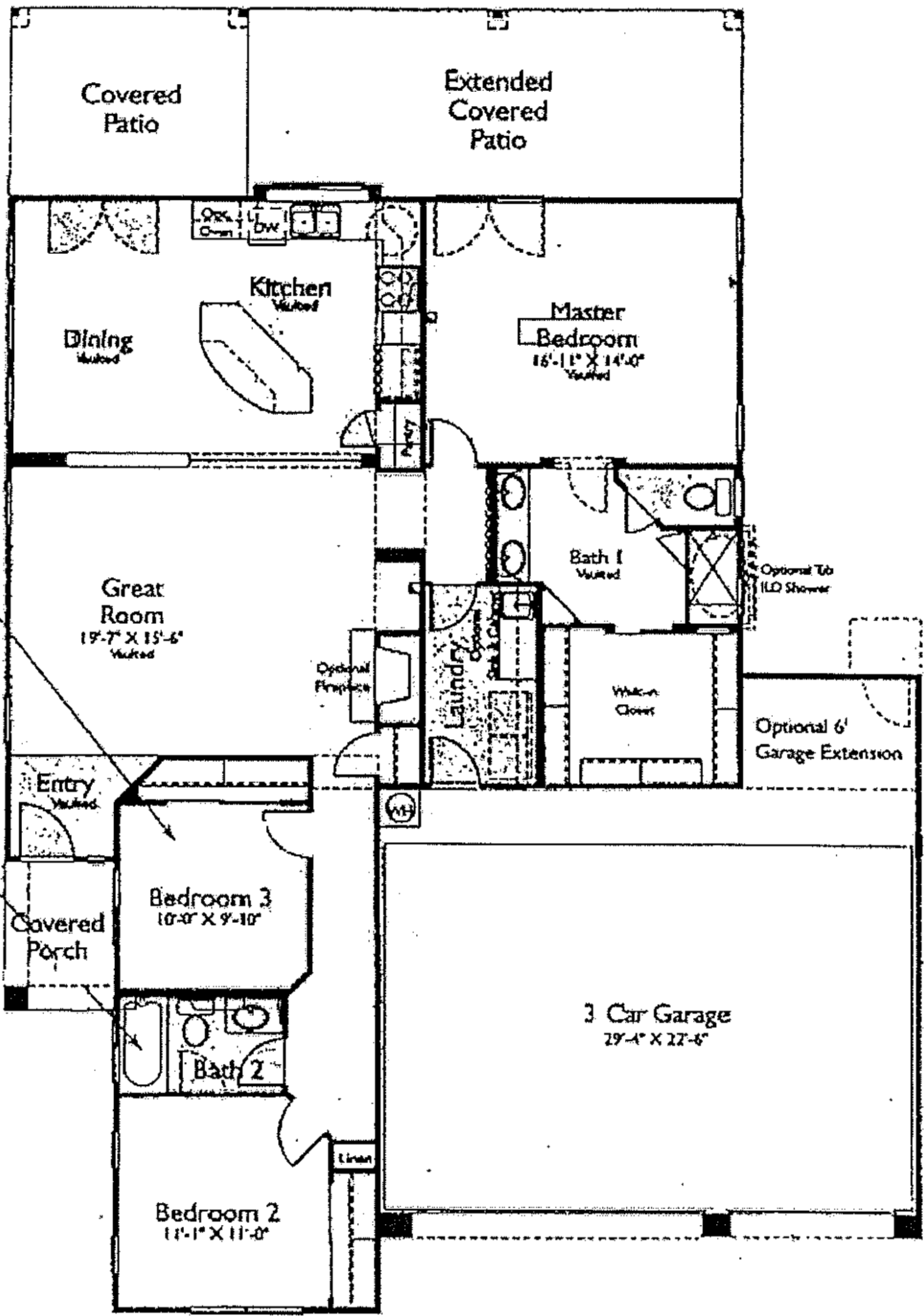
Plan 9027-3
1704 Sq. Ft.

The La Posada

Major Options

- Extended Covered Patio
- Bedroom 3
- Library
- Fireplace / Media Center
- 3rd Bay Garage Extension
- Golf Cart Garage

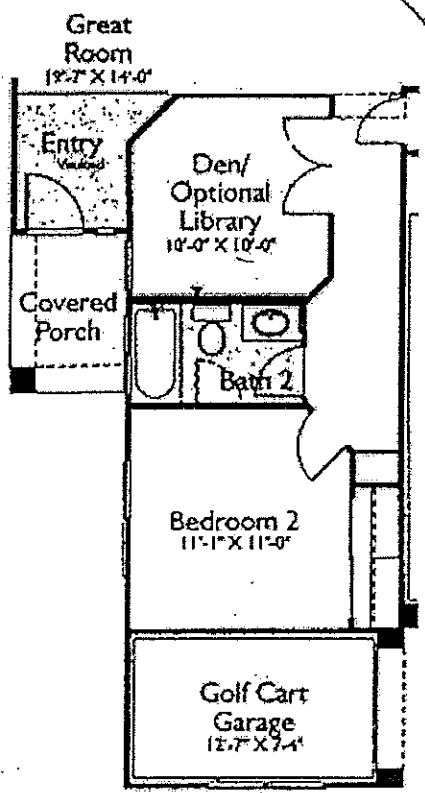
Flexible Options



Library



Shower
ILO Tub



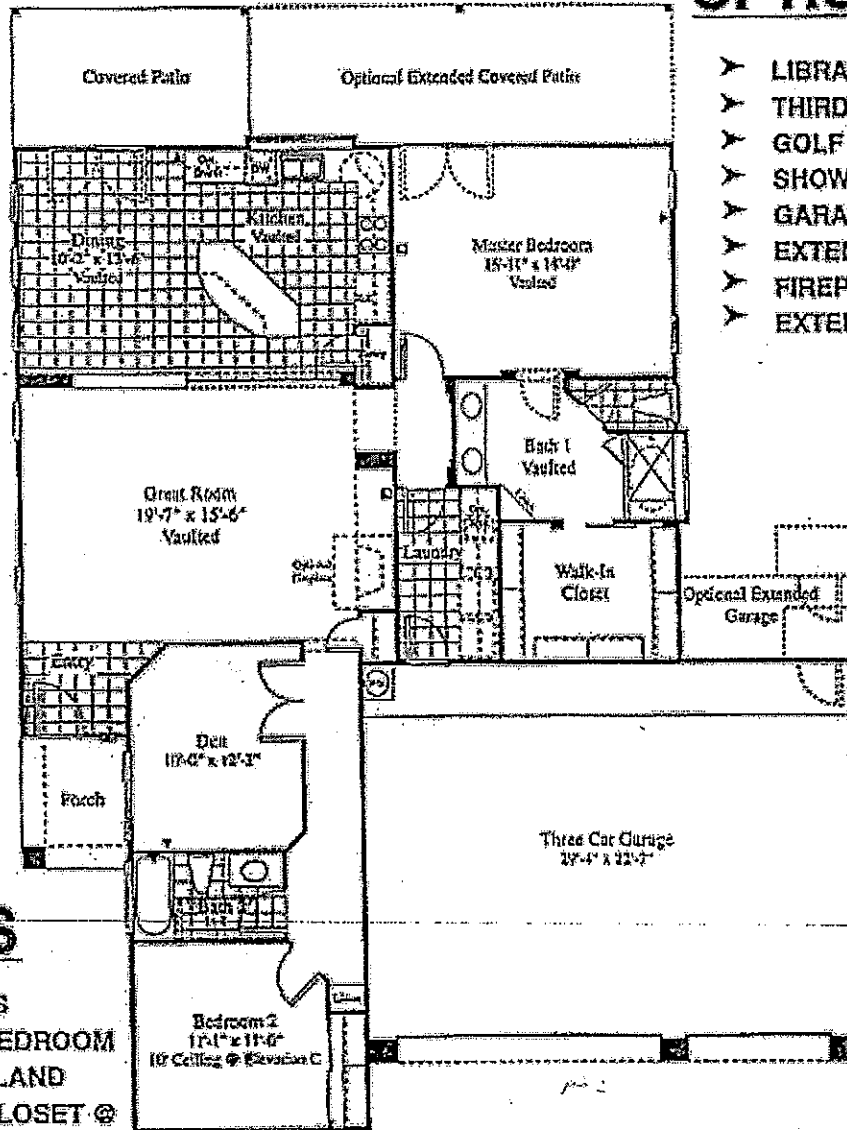
Optional Golf Cart Garage

LA POSADA

PLAN 9027-3

1,704 Sq. Ft.

OPTIONS



- LIBRARY I.L.O. DEN
- THIRD BEDROOM I.L.O. DEN
- GOLF CART GARAGE
- SHOWER I.L.O. TUB @ BATH 2
- GARAGE EXTENSION
- EXTENDED COVERED PATIO
- FIREPLACE/MEDIA
- EXTENDED 3RD CAR BAY

HIGHLIGHTS

- VAULTED CEILINGS
- LARGE MASTER BEDROOM
- HUGE KITCHEN ISLAND
- LARGE WALK-IN CLOSET @ MASTER BEDROOM
- EXTRA DEEP GARAGE
- 3 CAR GARAGE

Continental
Welcome Home

This floor plan and its interior design are an artist's conception. Location, size, materials, doors, windows, walls, fireplaces, vaulted areas and any other items depicted may vary depending on standard production or choice of options. Prices, plans, features and materials are subject to change without notice. Measurements are approximate.



