

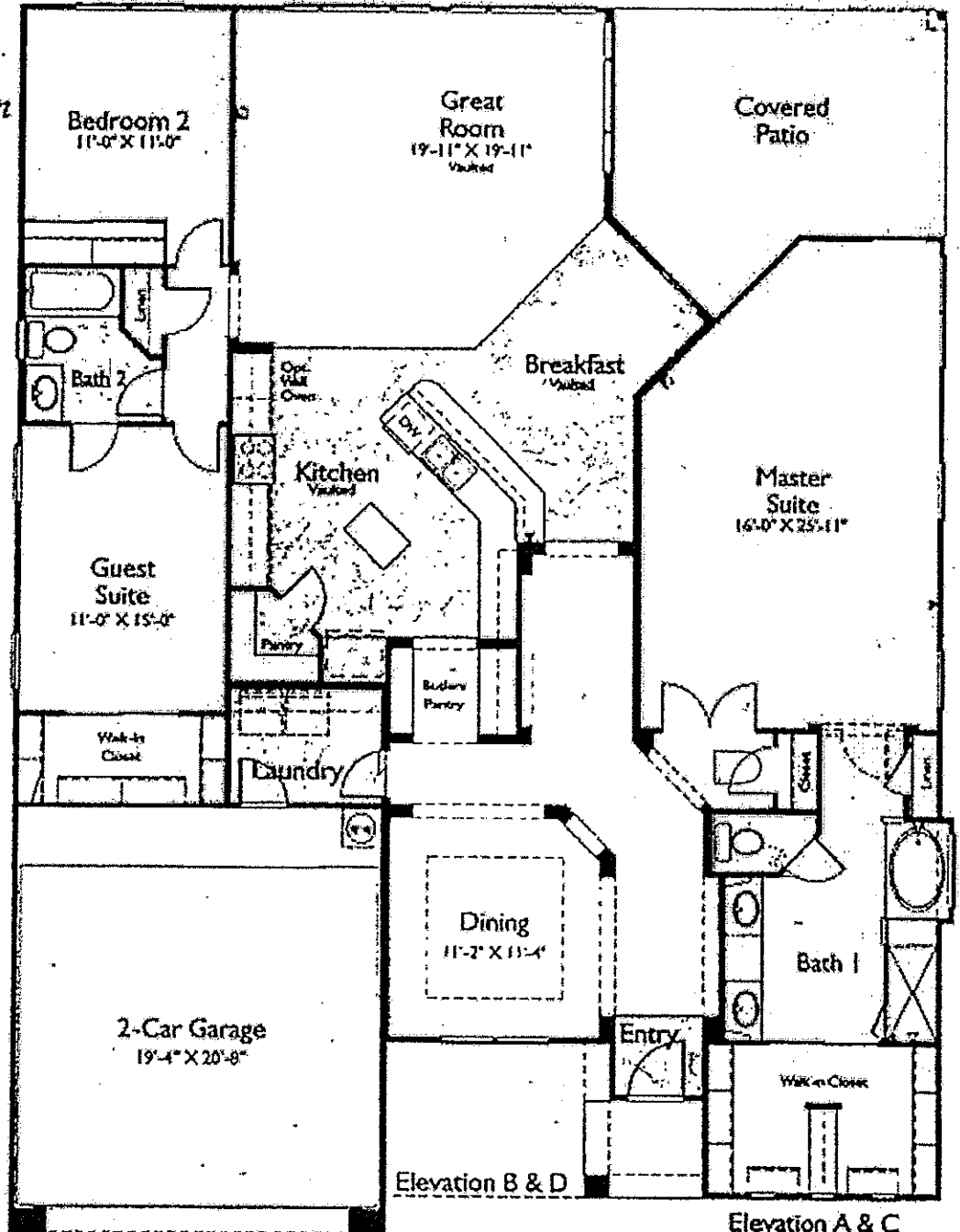
The Phoenician

Highlights

- Great Room
- Vaulted Ceilings
- Formal Dining
- Popular Split Floor Plan
- 3 Bedrooms, including
 - Master Suite
 - Guest Suite
- 2 Baths
- 2-Car Garage
- Covered Patio

Plan 9135

2391 Sq. Ft.



PHOENICIAN

OPTIONS

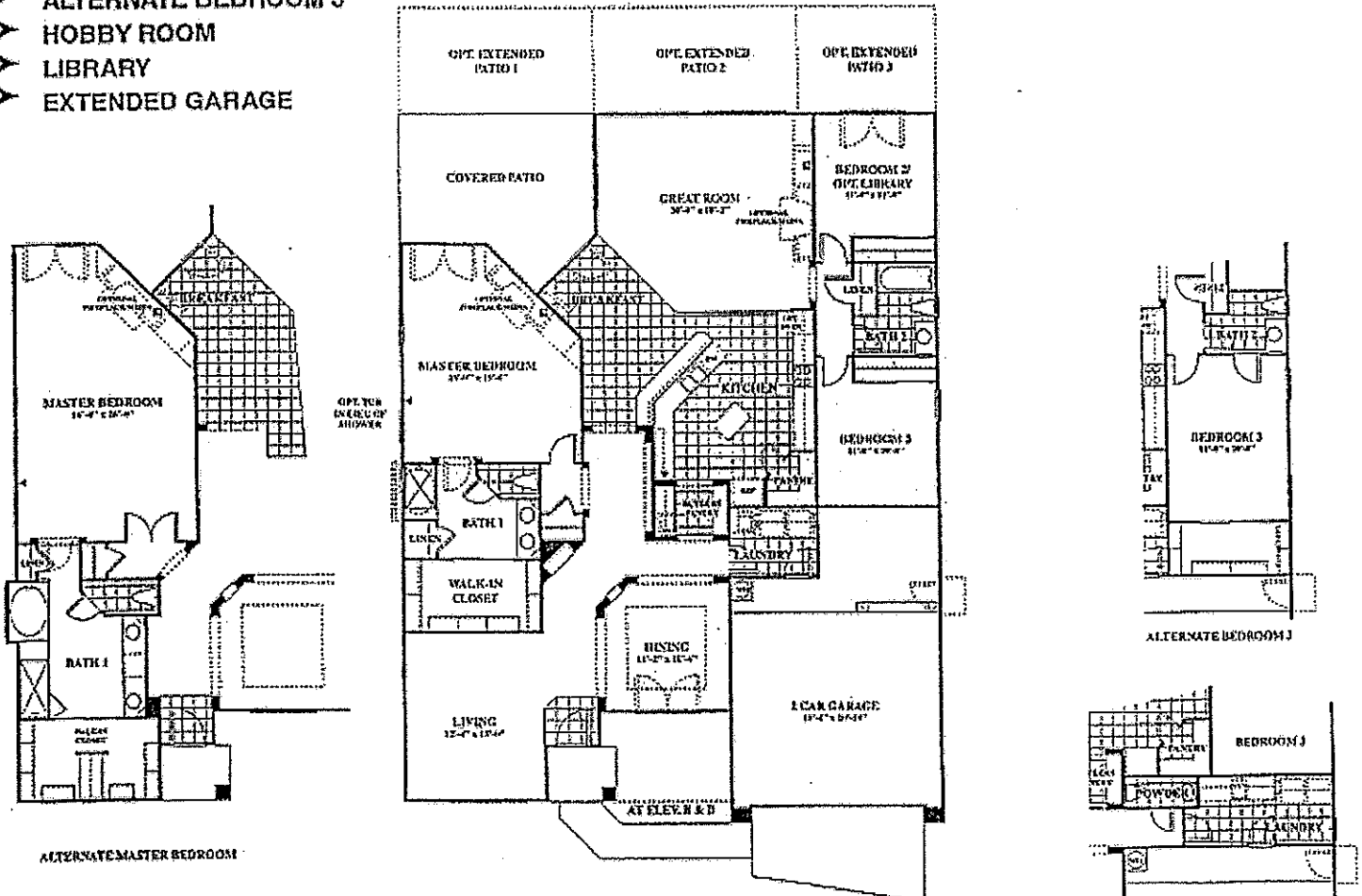
- FIREPLACE/ MEDIA
- EXTENDED PATIO
- EXTENDED COVERED PATIO
- WALL OVEN
- ALTERNATE MASTER BEDROOM
- EXTENDED LAUNDRY/ POWDER ROOM
- EXTENDED LAUNDRY
- POWDER ROOM
- ALTERNATE BEDROOM 3
- HOBBY ROOM
- LIBRARY
- EXTENDED GARAGE

PLAN 9135

2,319 Sq. Ft.

HIGHLIGHTS

- SPLIT BEDROOM PLAN
- PRIVATE MASTER SUITE
- HUGE PANTRY
- BUTLERS PANTRY
- ELEGANT DINING ROOM
- OPEN GREAT ROOM & BREAKFAST AREA
- LARGE COVERED PATIO INCLUDED



Continental

Welcome Home

OPTIONAL EXTENDED LAUNDRY/POWDER

This floor plan and its exterior design are only artist renderings. Location, size, elevation of doors, windows, walls, fireplaces, vaulted areas and any other item depicted may vary depending on esthetic preference or choice of options. Prices, plans, features and materials are subject to change without notice. All measurements are approximate.



The Phoenician

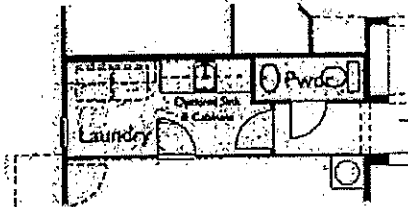
Flexible Options

Major Options

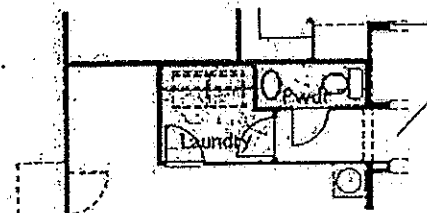
- Extended Covered Patios
- Library
- Living Room
- Extended Laundry / Hobby / Powder
- Cart Storage
- Garage Extensions
- Fireplaces / Media Center



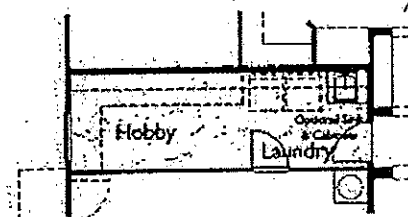
Library
w/ Media Center



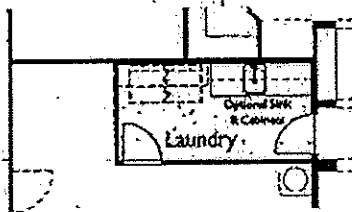
Extended
Laundry w/ Powder Room



Powder Room



Hobby Room



Extended Laundry Room



Separate
Tub & Shower

